



6° Congreso Internacional del GLP

Proyecto de Gas Natural Costa afuera

Liliana Gómez - Shell

22 de Agosto de 2024

88 AÑOS
IMPULSANDO
EL PROGRESO
EN COLOMBIA

CONFIDENTIAL

Definitions & cautionary note

The companies in which Royal Dutch Shell plc directly and indirectly owns investments are separate legal entities. In this **presentation** Shell", "Shell Group" and "Royal Dutch Shell" are sometimes used for convenience where references are made to Royal Dutch Shell plc and its subsidiaries in general. Likewise, the words "we", "us" and "our" are also used to refer to Royal Dutch Shell plc and its subsidiaries in general or to those who work for them. These terms are also used where no useful purpose is served by identifying the particular entity or entities. "Subsidiaries", "Shell subsidiaries" and "Shell companies" as used in this **presentation** refer to entities over which Royal Dutch Shell plc either directly or indirectly has control. Entities and unincorporated arrangements over which Shell has joint control are generally referred to as "joint ventures" and "joint operations", respectively. Entities over which Shell has significant influence but neither control nor joint control are referred to as "associates". The term "Shell interest" is used for convenience to indicate the direct and/or indirect ownership interest held by Shell in an entity or unincorporated joint arrangement, after exclusion of all third-party interest.

This **presentation** contains forward-looking statements (within the meaning of the U.S. Private Securities Litigation Reform Act of 1995) concerning the financial condition, results of operations and businesses of Royal Dutch Shell. All statements other than statements of historical fact are, or may be deemed to be, forward-looking statements. Forward-looking statements are statements of future expectations that are based on management's current expectations and assumptions and involve known and unknown risks and uncertainties that could cause actual results, performance or events to differ materially from those expressed or implied in these statements. Forward-looking statements include, among other things, statements concerning the potential exposure of Royal Dutch Shell to market risks and statements expressing management's expectations, beliefs, estimates, forecasts, projections and assumptions. These forward-looking statements are identified by their use of terms and phrases such as "aim", "ambition", "anticipate", "believe", "could", "estimate", "expect", "goals", "intend", "may", "objectives", "outlook", "plan", "probably", "project", "risks", "schedule", "seek", "should", "target", "will" and similar terms and phrases. There are a number of factors that could affect the future operations of Royal Dutch Shell and could cause those results to differ materially from those expressed in the forward-looking statements included in this presentation, including (without limitation): (a) price fluctuations in crude oil and natural gas; (b) changes in demand for Shell's products; (c) currency fluctuations; (d) drilling and production results; (e) reserves estimates; (f) loss of market share and industry competition; (g) environmental and physical risks; (h) risks associated with the identification of suitable potential acquisition properties and targets, and successful negotiation and completion of such transactions; (i) the risk of doing business in developing countries and countries subject to international sanctions; (j) legislative, fiscal and regulatory developments including regulatory measures addressing climate change; (k) economic and financial market conditions in various countries and regions; (l) political risks, including the risks of expropriation and renegotiation of the terms of contracts with governmental entities, delays or advancements in the approval of projects and delays in the reimbursement for shared costs; (m) risks associated with the impact of pandemics, such as the COVID-19 (coronavirus) outbreak; and (n) changes in trading conditions. No assurance is provided that future dividend payments will match or exceed previous dividend payments. All forward-looking statements contained in this presentation are expressly qualified in their entirety by the cautionary statements contained or referred to in this section. Readers should not place undue reliance on forward-looking statements. Additional risk factors that may affect future results are contained in Royal Dutch Shell's Form 20-F for the year ended December 31, 2019 (available at www.shell.com/investor and www.sec.gov). These risk factors also expressly qualify all forward-looking statements contained in this presentation and should be considered by the reader. Each forward-looking statement speaks only as of the date of this presentation, **March 13th, 2021**. Neither Royal Dutch Shell plc nor any of its subsidiaries undertake any obligation to publicly update or revise any forward-looking statement as a result of new information, future events or other information. In light of these risks, results could differ materially from those stated, implied or inferred from the forward-looking statements contained in this presentation.

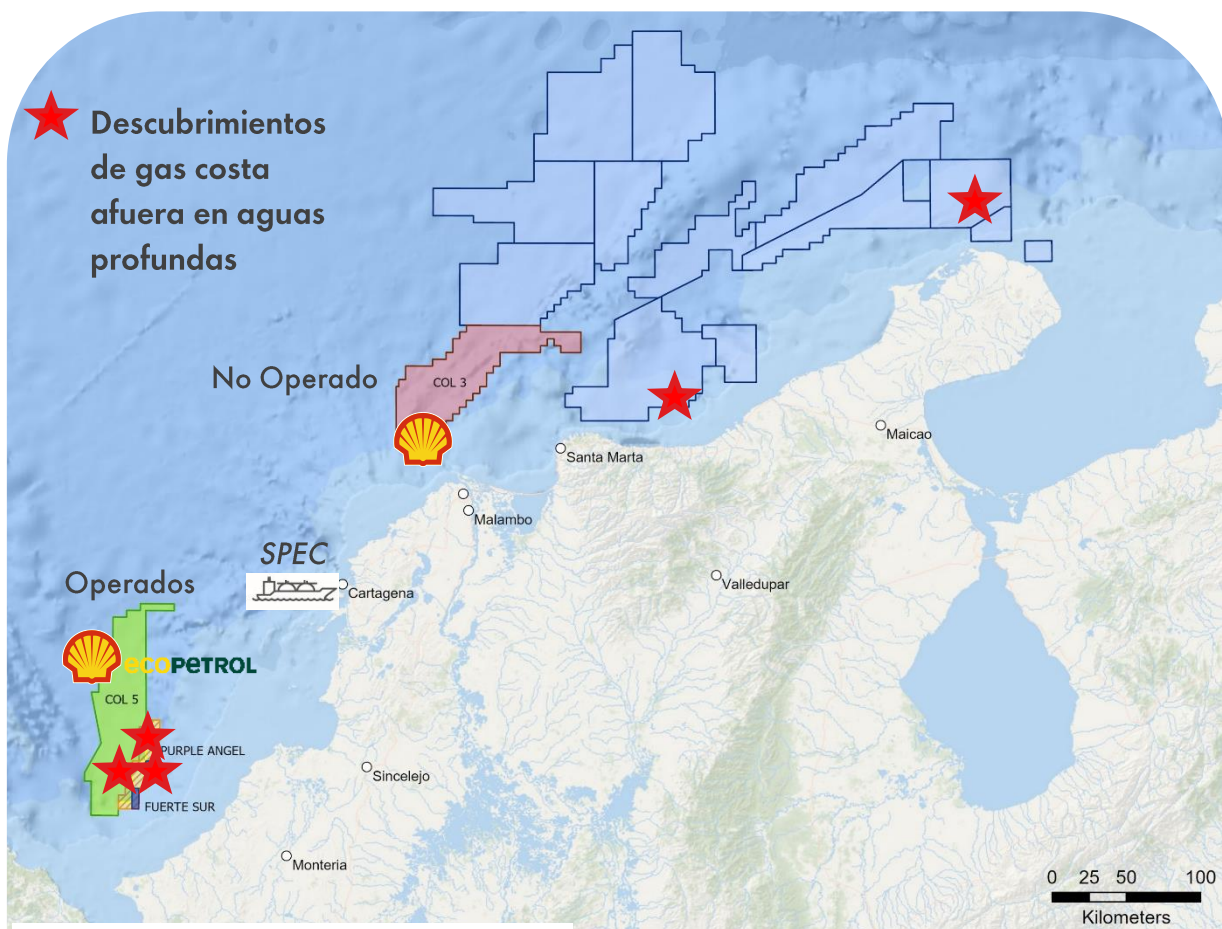
We may have used certain terms, such as resources, in this presentation that the United States Securities and Exchange Commission (SEC) strictly prohibits us from including in our filings with the SEC. Investors are urged to consider closely the disclosure in our Form 20-F, File No 1-32575, available on the SEC website www.sec.gov.

Shell en Colombia desde 1936



Fuentes de Gas Natural

Suministro confiable y flexible de gas y GNL para satisfacer las necesidades de clientes



- 3 Contratos de E&P operados por Shell (50%) en asocio con Ecopetrol.
- ✓ 3 descubrimientos de gas seco (>99% metano) sin contaminantes.
 - Gorgon-1, Gorgon-2
 - Kronos-1, Purple Angel-1
 - Glaucus-1
- Contrato COL 3: Noble operador 40%, Shell 60%
- GNL: mercado en expansión, confiable y flexible
 - Shell es un jugador líder en el GNL
 - 11% de la flota global de buques para GNL
 - 2 cargamentos por día.
 - Capacidad de liquefacción > 38 mtpa proveniente de más de 14 países.

Proyecto Cafetero / KGG

Descripción: Descubrimientos materiales en aguas profundas, con datos de evaluación completos disponibles, ideales para el desarrollo por fases. Ubicado a 75 km de la costa del mar Caribe colombiano, a 2400 m de profundidad de agua.

Recursos y desarrollo :

Volúmenes materiales de gas seco (>99% metano), sin contaminantes y mínimo tratamiento requerido para abastecer el mercado interno de gas colombiano..



Fase 1 (Campo Gorgon).

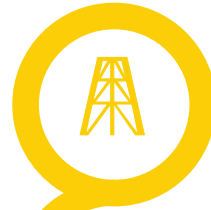
- Factibilidad técnica del concepto de desarrollo.
- Adquisición de datos meteorológicos y geotécnicos (1 año) a lo largo del corredor del oleoducto.
- Estrategia avanzada de permisos, incluyendo estudios socioambientales integrales.
- Avances en solución de evacuación



Apalancadores

Entender el Subsuelo

- Definir volúmenes de gas
- Evaluar productividad
- Perfiles de producción
- Concepto de Desarrollo
- Plan de abatimiento de emisiones



Evacuación & Comercialización

- Estructura de evacuación: rutas, modelo regulatorio, sincronización
- Reglas de comercialización para costa afuera



Licencia para operar

- Licencia Ambiental y social
- Marco regulatorio
- Coordinación interinstitucional
- Claridad y estabilidad en reglas de juego





